

Black Magic Woman

Written by bluelover

Monday, 07 May 2012 19:08 - Last Updated Saturday, 21 March 2015 14:31

Black Magic Woman

Black Magic Woman became a classic hit by Santana in 1970. As sung by Gregg Rolie, reaching #4 in the U.S. and Canadian charts, after appearing on their *Abraxas* album.

Gregg Alan Rolie

(born June 17, 1947, Seattle) is an American keyboardist, organist, and singer, who is one of the founding members of the bands Santana, *The Storm*, *Abraxas* *Pool* and *Journey*, for whom he was the original lead singer.

Black Magic Woman

Actually, "**Black Magic Woman**" is a song written by Peter Green that first appeared as a Fleetwood Mac single in various countries in 1968, subsequently appearing on the 1969 Fleetwood Mac compilation albums *English Rose* (US) and *The Pious Bird of Good Omen* (UK).



Black Magic Woman

Written by bluelover

Monday, 07 May 2012 19:08 - Last Updated Saturday, 21 March 2015 14:31

Gregg Rolie

Peter Green (born 29 October 1946, Bethnal Green, London) is a British blues rock guitarist and the founder of the band **Fleetwood Mac**.

Along with Eric Clapton, Peter Green is often mentioned as one of the two best guitarists of the British blues boom of the mid-1960s to 1970. As the guiding impetus of the original lineup of Fleetwood Mac, Green wrote and performed a dazzling string of hits that by 1969 had outsold singles by the Beatles and the Rolling Stones. While Clapton's playing has prompted comparisons to Freddy King and Albert King, Green's sound is considered to be more like the style of American blues legend B.B. King.



Peter Green

Although not as popular as Santana's arrangement two years later, "*Black Magic Woman*" nevertheless became a fairly popular blues-rock hit peaking at #37 in the UK Singles Chart. It was featured in Fleetwood Mac live set-lists even after Green had left the band.

Black Magic Woman

Written by bluelover

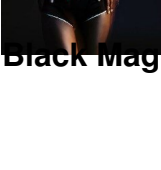
Monday, 07 May 2012 19:08 - Last Updated Saturday, 21 March 2015 14:31



Fleetwood Mac - Black Magic Woman, single



Santana - Black Magic Woman, single



Black Magic Woman is a song by Fleetwood Mac, released as a single in 1968. It is the first single from their album 'Fleetwood Mac' and was written by Stevie Nicks. The song is a blues-influenced rock ballad and was a major hit, reaching number one on the Billboard Hot 100 chart.

Fleetwood Mac performed "Black Magic Woman" at The Alembic Auditorium in Seattle, Washington, in 1970. The performance was part of their 'Fleetwood Mac' tour.

Stevie Nicks' performance of "Black Magic Woman" in 1970 is a notable example of her early work. The song is a blues-influenced rock ballad and was a major hit, reaching number one on the Billboard Hot 100 chart.

Stevie Nicks' performance of "Black Magic Woman" in 1970 is a notable example of her early work. The song is a blues-influenced rock ballad and was a major hit, reaching number one on the Billboard Hot 100 chart.

Stevie Nicks' performance of "Black Magic Woman" in 1970 is a notable example of her early work. The song is a blues-influenced rock ballad and was a major hit, reaching number one on the Billboard Hot 100 chart.

Stevie Nicks' performance of "Black Magic Woman" in 1970 is a notable example of her early work. The song is a blues-influenced rock ballad and was a major hit, reaching number one on the Billboard Hot 100 chart.

Stevie Nicks' performance of "Black Magic Woman" in 1970 is a notable example of her early work. The song is a blues-influenced rock ballad and was a major hit, reaching number one on the Billboard Hot 100 chart.

Black magic Woman